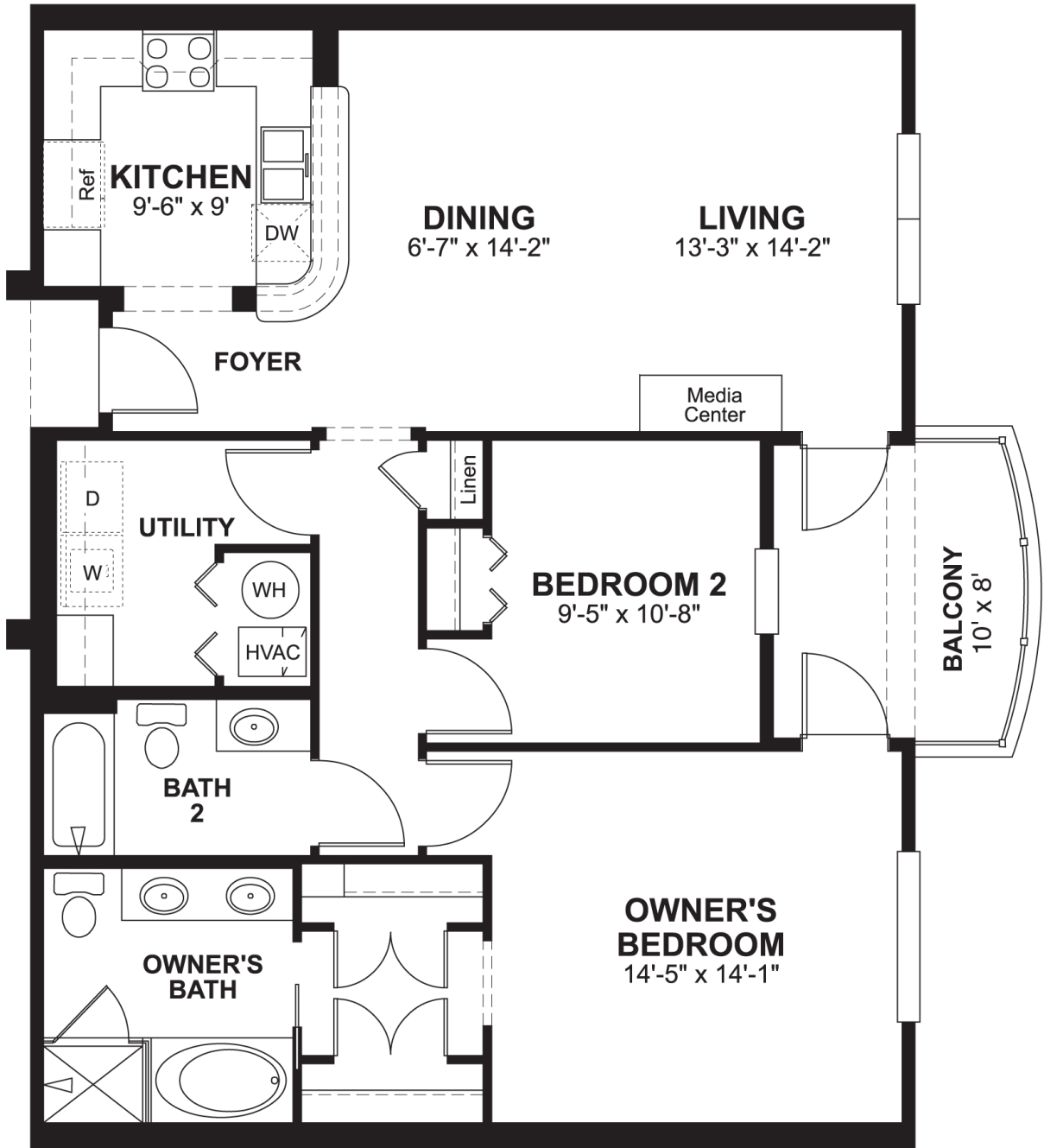


THE ELLISTON

- 2 bedroom
- 2 bath



OPT, Optional; ILO, In Lieu Of; UTIL, Utility; WIC, Walk In Closet; PWDR, Powder Room; SGD, Sliding Glass Door; W, Washer; D, Dryer; WH, Water Heater; DW, Dishwasher; REF, Refrigerator; HVAC, Heating, Ventilating and Air Conditioning; WO, Wall Oven; Dotted lines, optional items; Dashed lines, elevated features



If you're ready to see the New Downtown for yourself, call our sales team at 901-528-1405 today. For more info, and to learn about available 100% FHA Financing, drop us an email at info@stateplaceliving.com.

Due to our consistent efforts to improve our homes, State Place reserves the right to make changes without notice or obligation. Illustrations and specifications are believed correct at time of publication, and are not intended to create any warranty or contract rights. All dimensions are approximate. Details shown may vary depending on the elevation and options chosen. Please consult your New Home Counselor for details or for the method in which the square footage is calculated. © 2008 State Place

