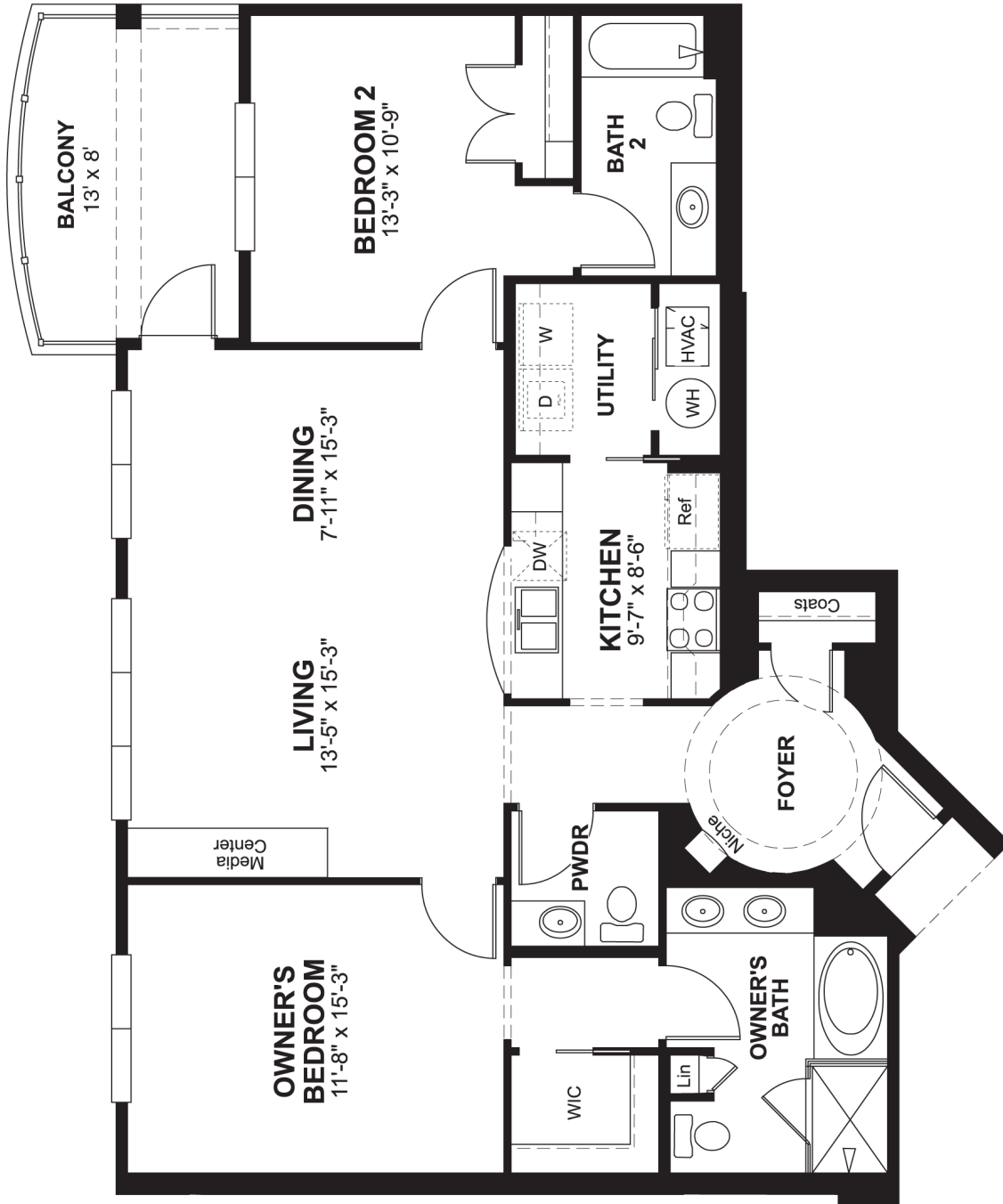


# THE OXFORD

- 2 bedroom
- 2.5 bath



OPT, Optional; ILO, In Lieu Of; UTIL, Utility; WIC, Walk In Closet; PWDR, Powder Room; SGD, Sliding Glass Door; W, Washer; D, Dryer; WH, Water Heater; DW, Dishwasher; REF, Refrigerator; HVAC, Heating, Ventilating and Air Conditioning; WO, Wall Oven; Dotted lines, optional items; Dashed lines, elevated features

**If you're ready to see the New Downtown for yourself, call our sales team at 901-528-1405 today. For more info, and to learn about available 100% FHA Financing, drop us an email at [info@stateplaceliving.com](mailto:info@stateplaceliving.com).**

